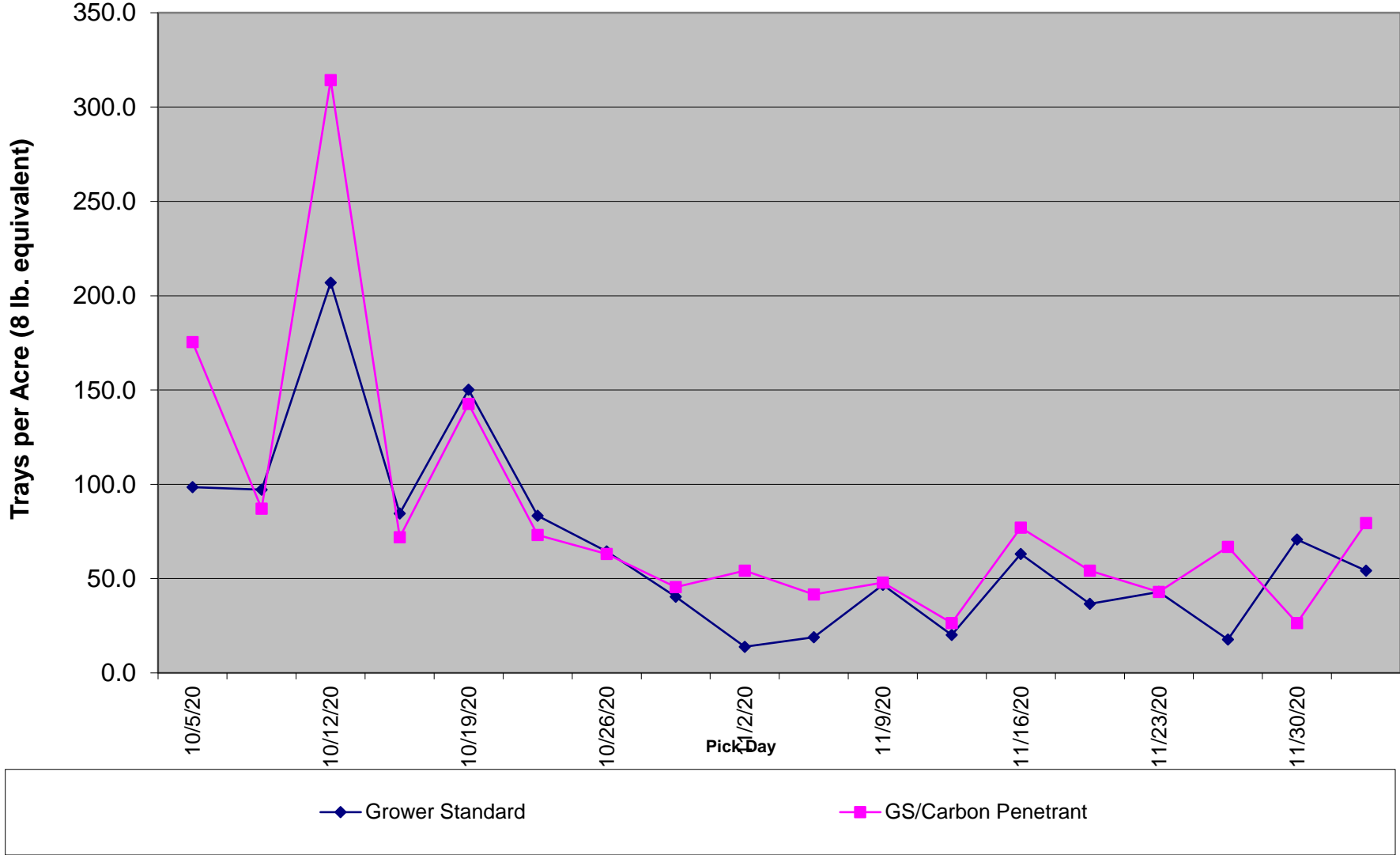
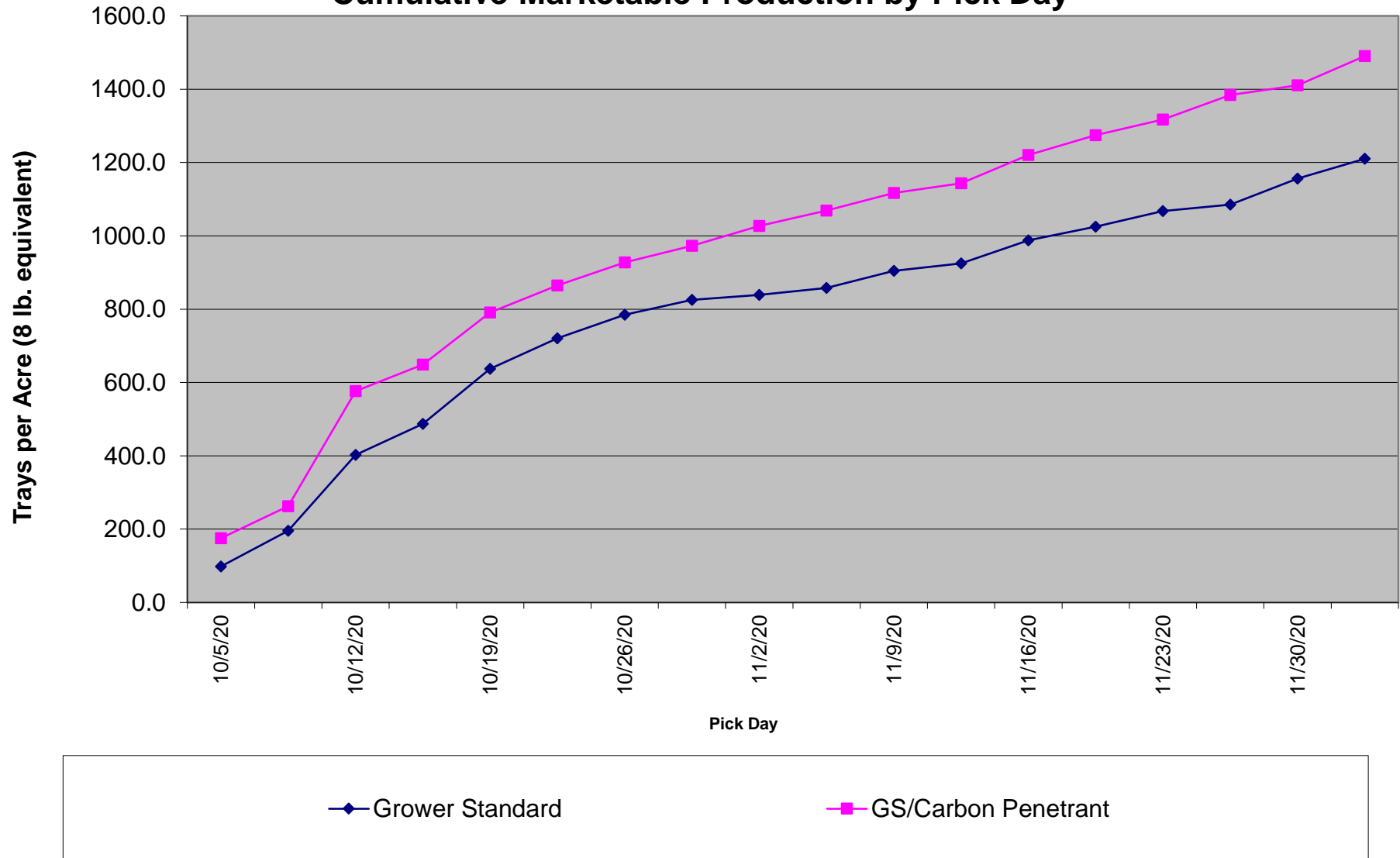


Chart 1: Penny Newman Strawberries - Ventura County - Fall 2020 - Marketable Production by Pick Day



Means followed by the same letter do not significantly differ (P=.10,NDMRT)

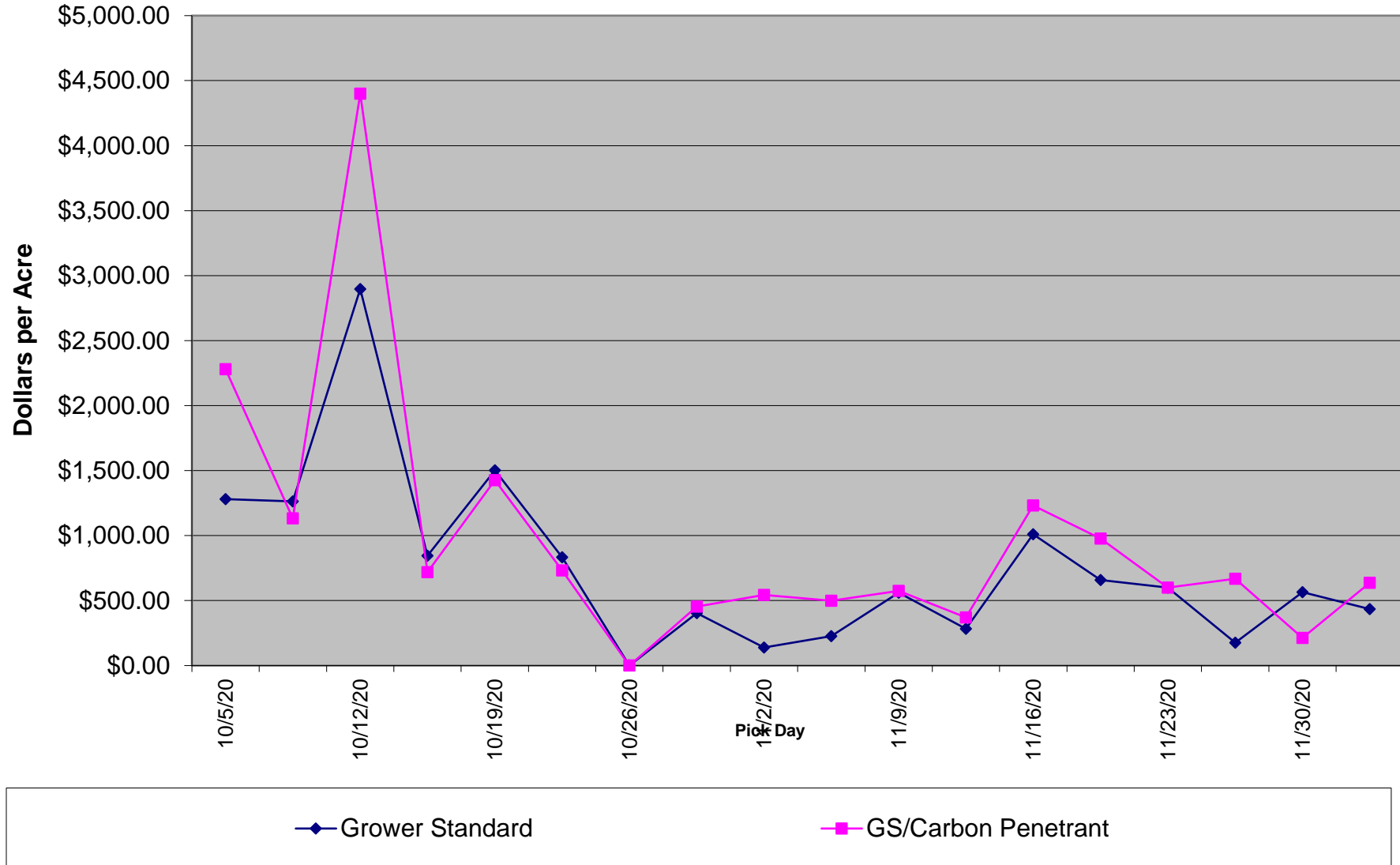
Chart 2: Penny Newman Strawberries - Ventura County - Fall 2020 - Cumulative Marketable Production by Pick Day



Means followed by the same letter do not significantly differ (P=.10,NDMRT)

Holden Research and Consulting - David Holden

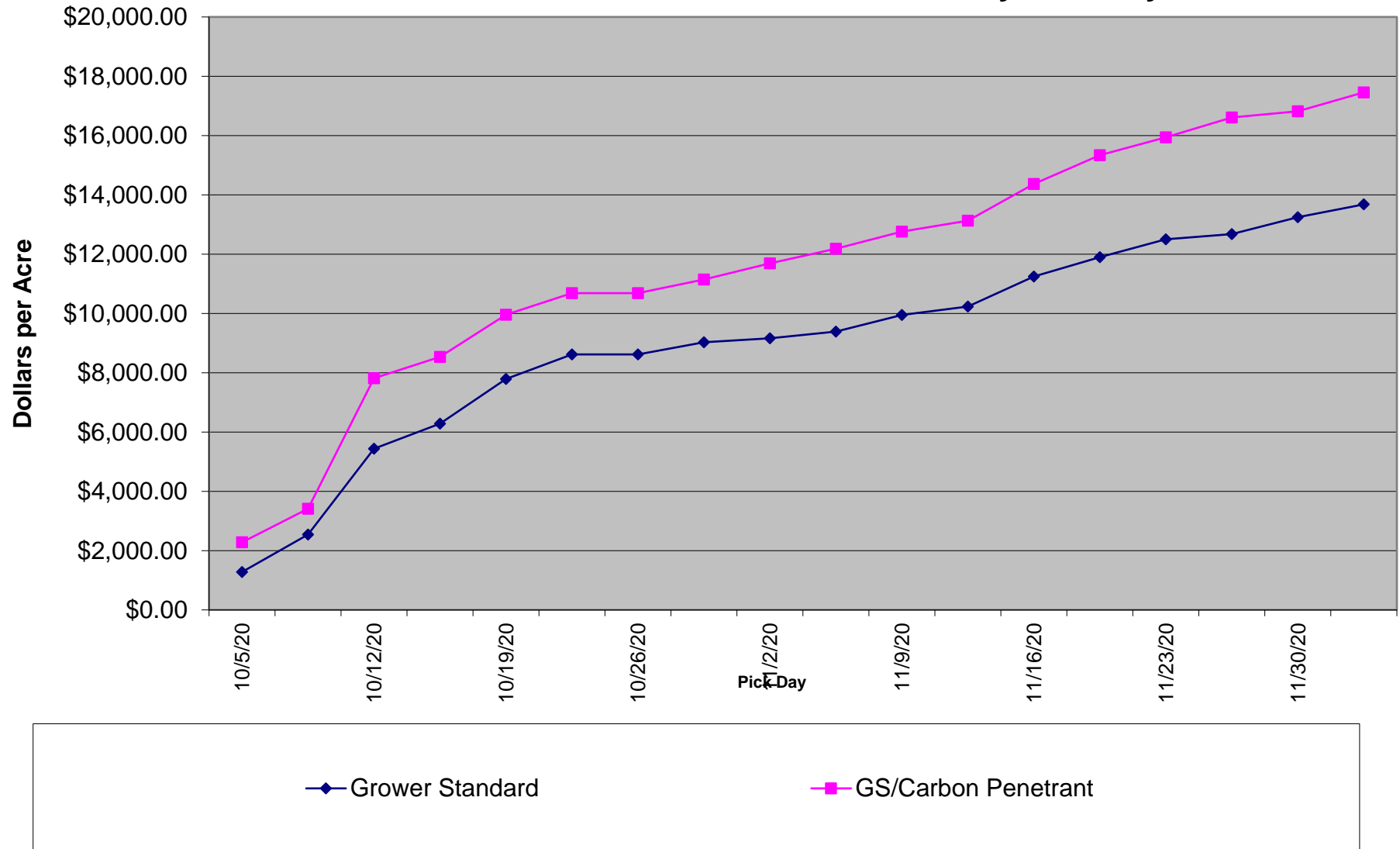
**Chart 3 Penny Newman Strawberries - Ventura County - Fall 2020 -
Marketable Production Net Return by Pick Day**



Means followed by the same letter do not significantly differ (P=.10,NDMRT)

Holden Research and Consulting - David Holden

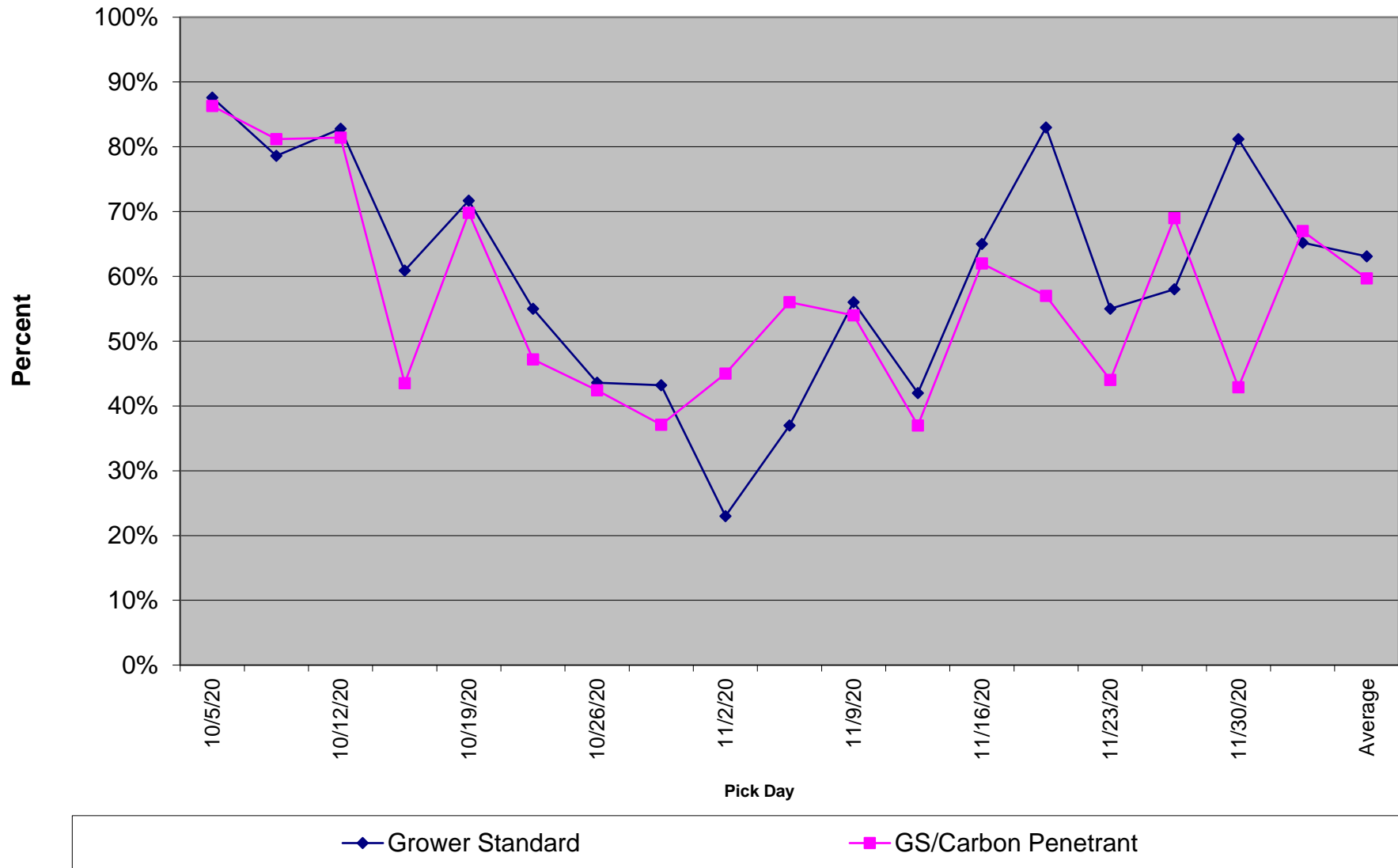
Chart 4: Penny Newman Strawberries - Ventura County - Fall 2020 - Cumulative Marketable Production Net Return by Pick Day



Means followed by the same letter do not significantly differ (P=.10,NDMRT)

Holden Research and Consulting - David Holden

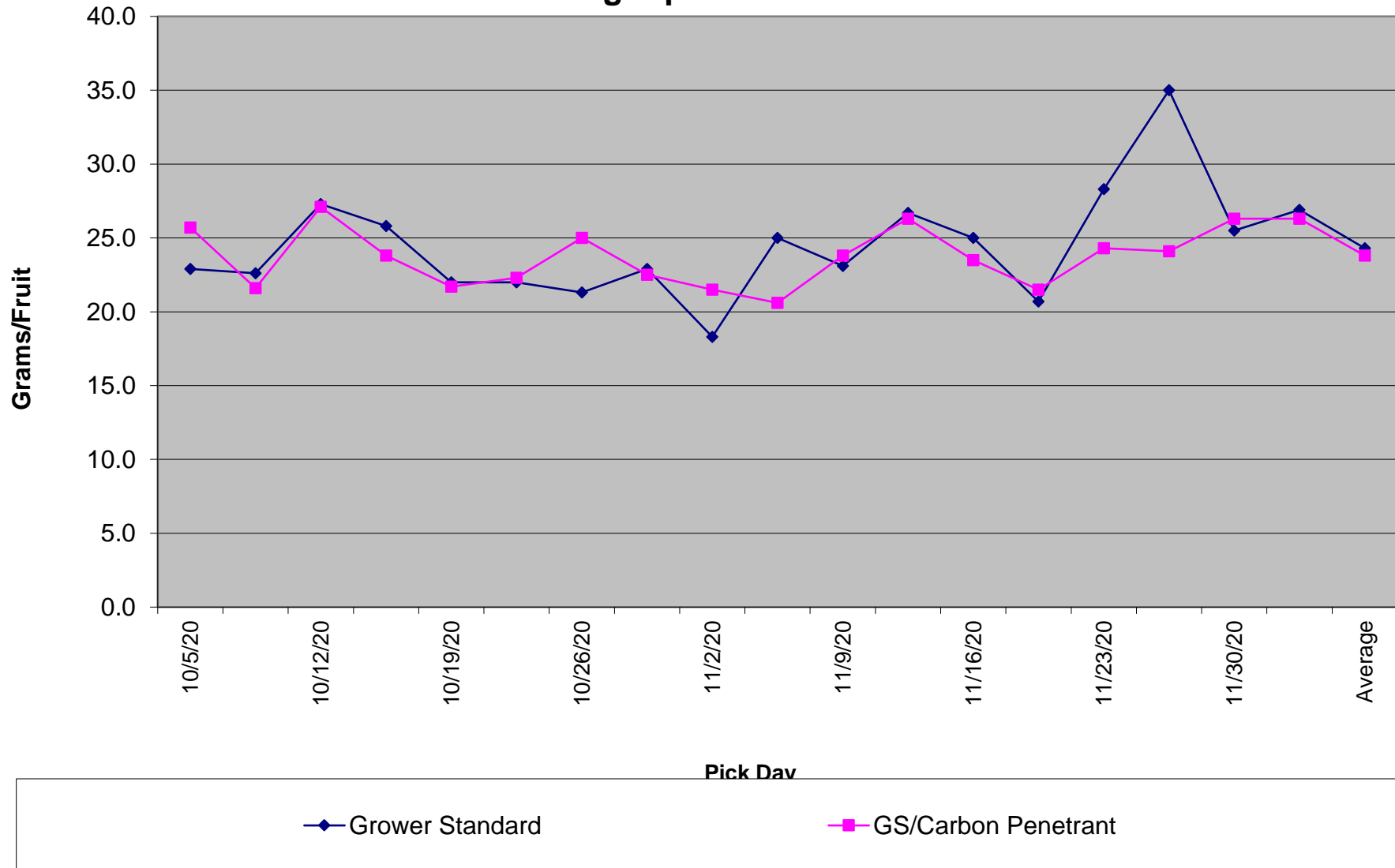
Chart 5: Penny Newman Strawberries - Ventura County - Fall 2020 - Marketable Utilization by Pick Day



Means followed by the same letter do not significantly differ (P=.10,NDMRT)

Holden Research and Consulting - David Holden

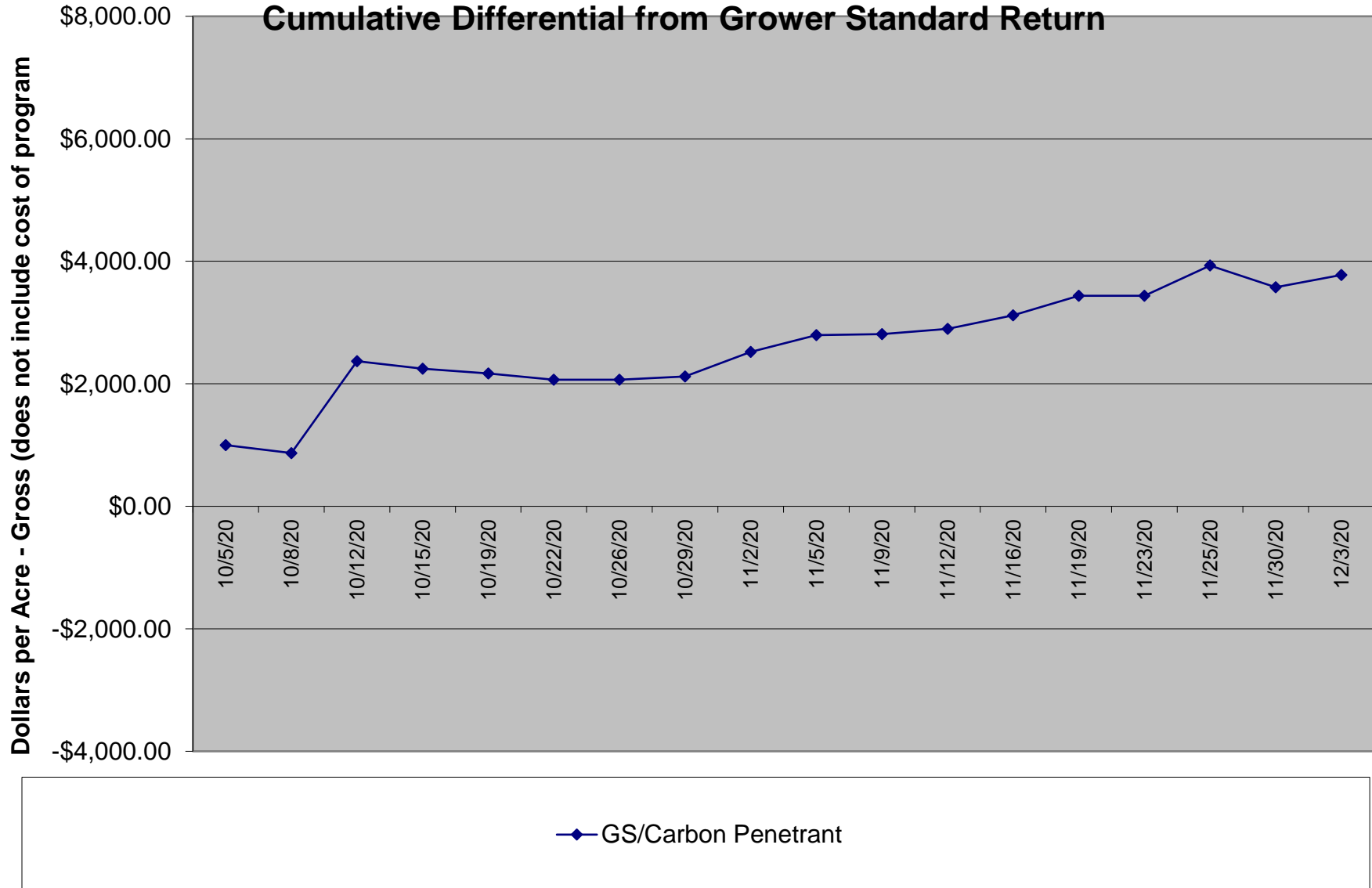
Chart 6: Penny Newman Strawberries - Ventura County - Fall 2020 - Mean Weight per Marketable Fruit



Means followed by the same letter do not significantly differ (P=.10,NDMRT)

Holden Research and Consulting - David Holden

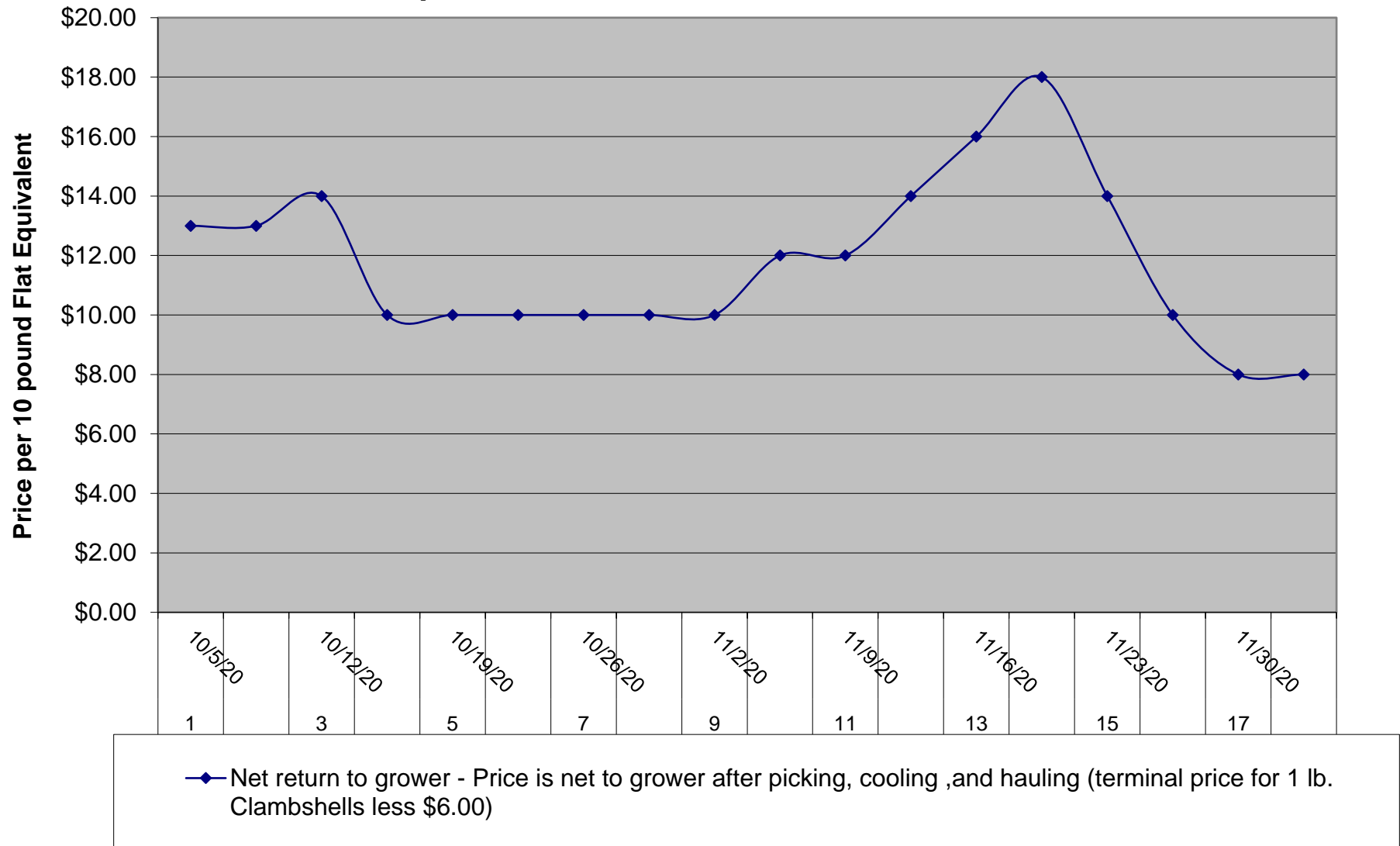
Chart 7: Penny Newman Strawberries - Ventura County - Fall 2020 - Cumulative Differential from Grower Standard Return



Means followed by the same letter do not significantly differ (P=.10,NDMRT)

Holden Research and Consulting - David Holden

**Chart 8: Penny Newman Strawberries - Ventura County - Fall 2020 -
Net Price per Flat Return to Grower on Date Indicated**



Means followed by the same letter do not significantly differ (P=.10,NDMRT)

Holden Research and Consulting - David Holden